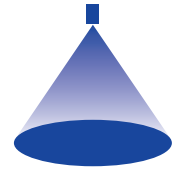


# ➤ Axial-flow full cone nozzles Series 403

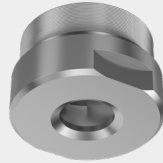


### Features:

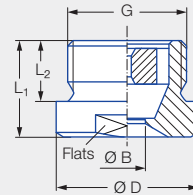
- Extremely uniform liquid distribution

### Applications:

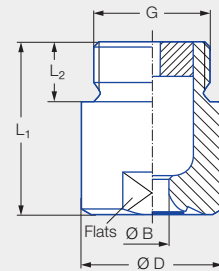
- Surface spraying
- Spraying over packings
- Chemical process engineering
- Cleaning and washing processes
- Cooling



Series 403



90° version



120° version

### 90° version

Type	G	Dimensions [mm]				Weight [kg]
		L <sub>1</sub>	L <sub>2</sub>	Ø D	Flats	
<b>403.446/403.486</b>	2 1/2 BSPP	52.0	27.0	83.0	75	1.3
<b>403.526</b>	3 BSPP	60.0	30.0	98.0	85	2.0
<b>403.606</b>	3 1/2 BSPP	70.0	32.0	118.0	105	3.6

### 120° version

Type	G	Dimensions [mm]				Weight [kg]
		L <sub>1</sub>	L <sub>2</sub>	Ø D	Flats	
<b>403.448/403.488</b>	2 1/2 BSPP	124.0	27.0	83.0	75	3.2
<b>403.528</b>	3 BSPP	153.0	30.0	98.0	85	5.4
<b>403.608</b>	3 1/2 BSPP	156.0	32.0	118.0	105	8.3
<b>403.628</b>	4 BSPP	165.0	36.0	128.0	110	9.6

Spray angle	Ordering no.		Bore diameter B [mm]	Narrowest free cross sections Ø [mm]	V̇ water [l/min]							Spray diameter D [mm] (at p = 2 bar)	
	Type	Mat. no.			p [bar]							 H = 500 [mm]    H = 1,000 [mm]	
		1Y			0.3	0.5	1.0	2.0	3.0	5.0	7.0		
90°	<b>403.446</b>	●	25.0	12.0	187	230	303	<b>400</b>	470	577	660	1,000	1,780
	<b>403.486</b>	●	29.5	12.0	234	287	379	<b>500</b>	588	721	825	1,000	1,780
	<b>403.526</b>	●	32.0	13.8	295	362	477	<b>630</b>	741	909	1,040	1,000	1,780
	<b>403.606</b>	●	40.0	15.0	468	574	758	<b>1,000</b>	1,176	1,443	1,651	1,000	1,780
120°	<b>403.448</b>	●	25.5	10.0	187	230	303	<b>400</b>	470	577	660	1,700	2,930
	<b>403.488</b>	●	29.5	11.0	234	287	379	<b>500</b>	588	721	825	1,700	2,930
	<b>403.528</b>	●	32.0	15.0	295	362	477	<b>630</b>	741	909	1,040	1,700	2,930
	<b>403.608</b>	●	42.0	12.0	468	574	758	<b>1,000</b>	1,176	1,443	1,651	1,700	2,930
	<b>403.628</b>	●	45.0	15.0	585	718	947	<b>1,250</b>	1,470	1,803	2,063	1,700	2,930

Conversion formula for this series:  $\dot{V}_2 = \dot{V}_1 \cdot \left(\frac{p_2}{p_1}\right)^{0.4}$   
(≤ 10 bar)

Ordering Type + Material no. = Ordering no.  
example: 403.446 + 1Y = 403.446.1Y

Assembly accessories can be found in Chapter 9 "Accessories".